

SHEEPDROVE ORGANIC FARM  
LAMBOURN



Why should farmers just feed grass to their cattle and sheep.



900 hectares in total

consisting of :

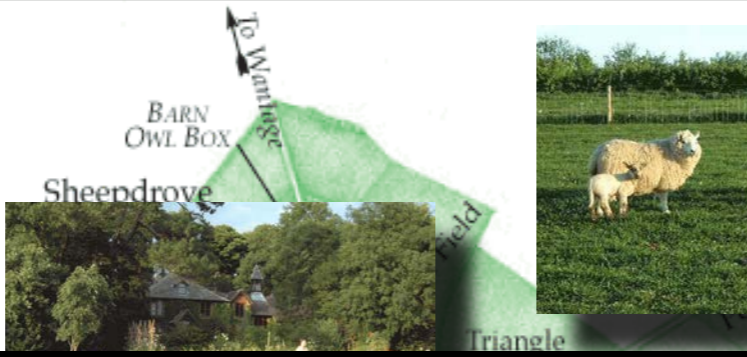
rotational grassland - 307 ha

permanent grassland - 96ha

arable - 370 ha

conservation - 60ha

woodland - 50ha



Typical view across the farm showing beetle bank for wildlife, hedge



but we are really grass farmers!



2250 Acres of Chalk Downland

# Cattle

at present 120 suckler cows  
increasing to 300  
all offspring finished on grass  
for our own retail outlets  
all native breeds





# Sheep



1050 ewes lambing outside in April  
increasing to 2500 ewes mainly  
native breeds



At Sheepdrove we are going for:

More traditional breeds



# Herdwicks & Shetlands







All our pasture fed meats are sold through our own retail outlets.

Andrew McCarg  
Photography

FAMILY SHEEPDROVE ORGANIC FARM BUTCHER



*Organic Meat and Poultry direct from our Farm*



No 7

FAMILY



BUTCHER

*SHEEPDROVE ORGANIC FARM*

*Organic Meat and Poultry direct from our Farm*



# Foraging and grass cropping









# Lots of Conservation Work at Sheepdrove Organic Farm

## Examples of our initiatives...

- New water habitats - Reedbed System & 3 dew ponds created.
- Re-created 75 hectares chalk grassland habitat on previously arable land.
- We developed special 12-metre-wide Wildlife Mix strips under Stewardship arable options, 2 mix types together to make almost 10ha wildlife corridor.
- New plantations totalling 21.52 ha grow in 8 new plots.
- Beetle Banks & margins make 72 km of habitat for helpful pest predators.
- More than 20.5km (13 miles) of new hedgerows across the farm.





*cowslips*






# Hedgerow plantings



# Soil with better Biodiversity holds nutrients better



A wide-angle photograph of a vast field of purple flowers, likely lavender, stretching towards a horizon. In the background, a wooden fence line runs across the field. The sky is overcast with grey clouds. The text "Alternate cropping" is overlaid in the center of the image.

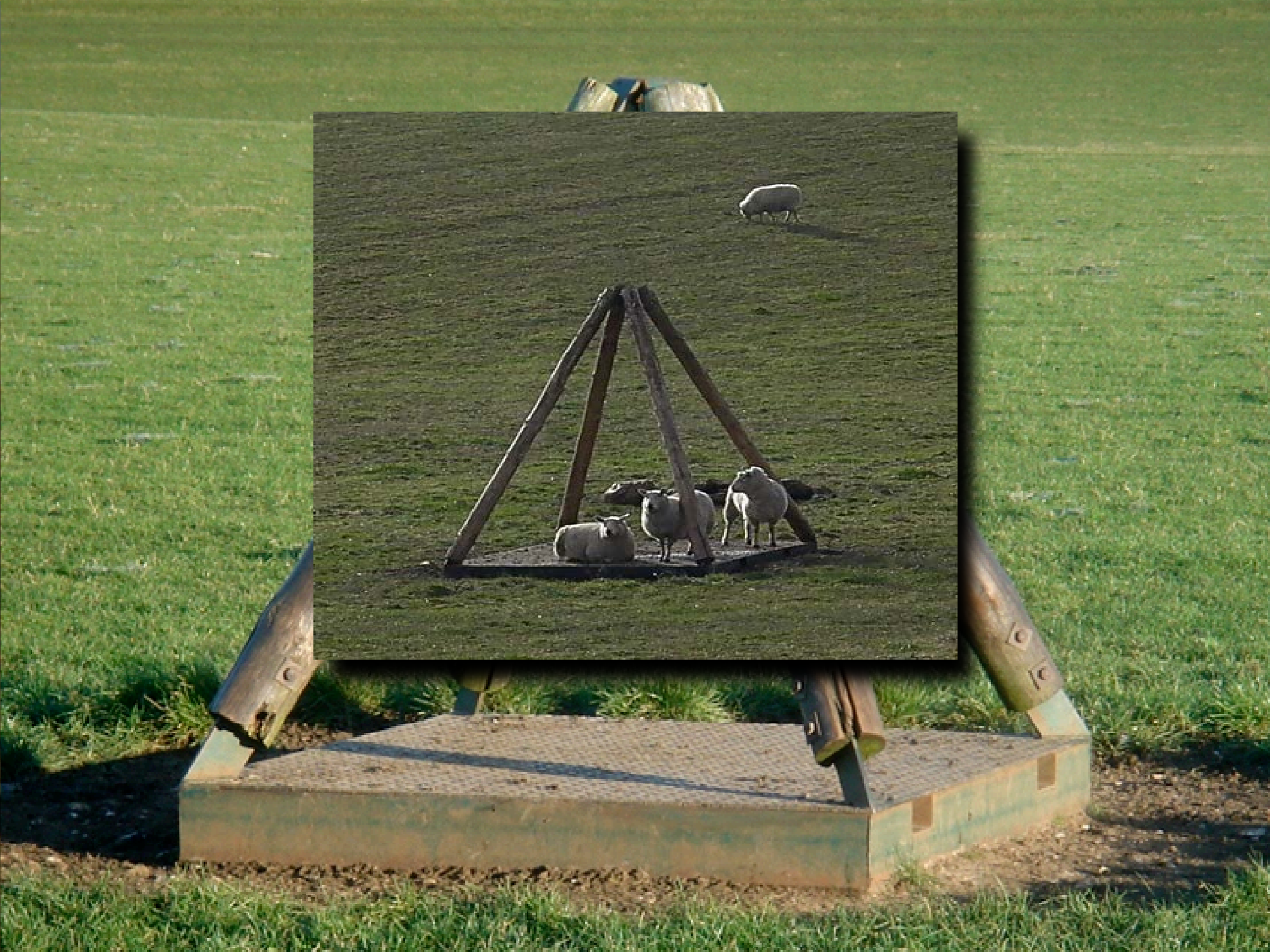
**Alternate cropping**







**Animal welfare  
from an early age  
is paramount**

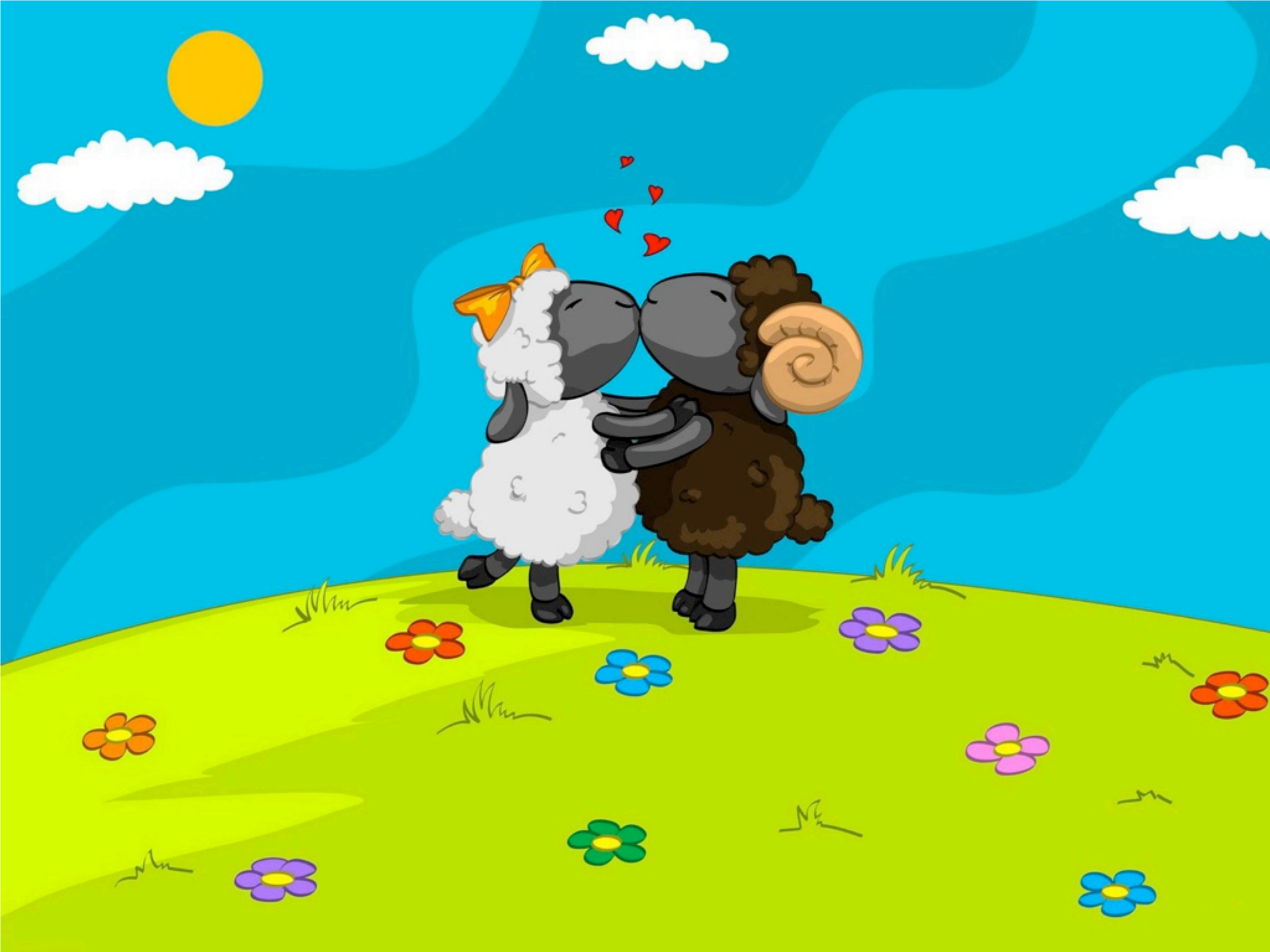


A photograph of three black pigs in a natural, outdoor setting. The pig in the foreground is looking directly at the camera, while the others are foraging on the ground. The background is filled with green trees and foliage.

Other  
foraging  
animals here  
at  
Sheepdrove







A photograph of a herd of cows grazing in a field. In the foreground, there is a pond with a reflection of the sky and the surrounding landscape. The cows are scattered across the field, some standing and some lying down. The background shows rolling hills under a clear sky. The text "Onwards and upwards with the PFLA!" is overlaid in white, bold, sans-serif font.

Onwards and  
upwards  
with the  
PFLA!

As we all know grass fed meat is the  
best

